

REDEFINING ELEVATOR CALLING EXPERIENCE

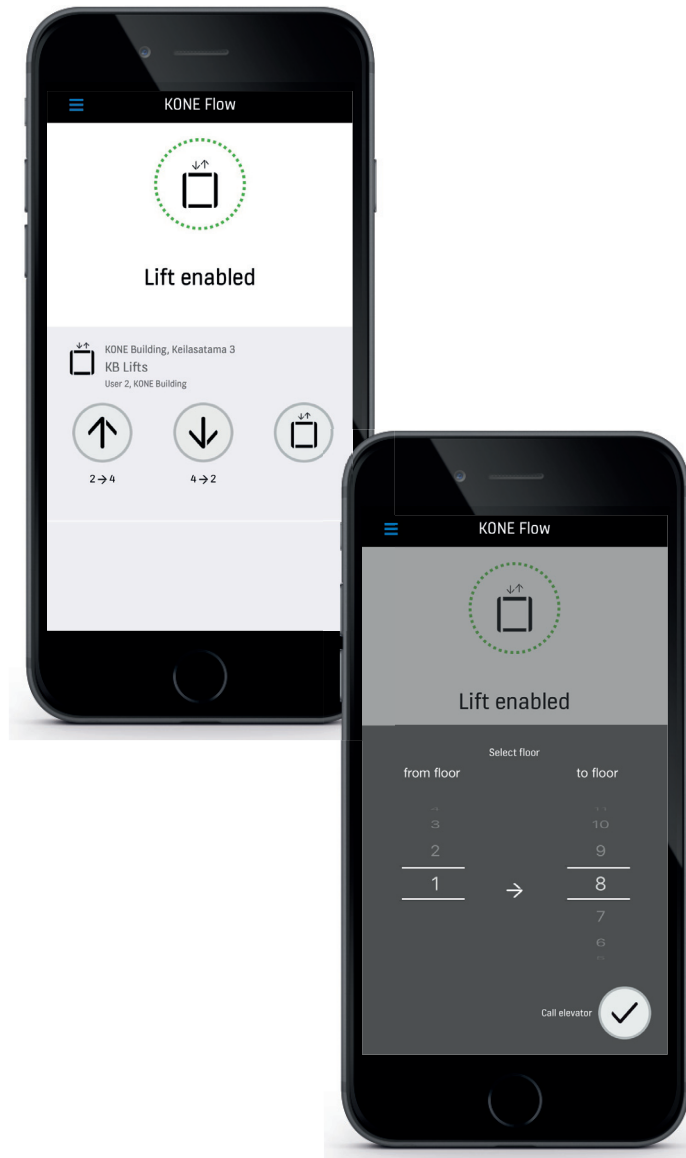


KONE Elevator Call is a cloud based solution that allows the user to call the elevator with their smart phone - no need to touch elevator buttons. It includes KONE Flow application that is installed to user's smart phone and is used to give destination calls to an elevators anywhere in the building. It is available for mobile phones using the latest iOS and Android mobile phone operating systems.



KONE ELEVATOR CALL

Avoid touching surfaces by calling the elevator with your smartphone



KEY BENEFITS

Safety

- No need to touch the elevator buttons
- User can maintain safe distance to others while making the call
- User can make calls only to allowed floors (access is managed by customer in KONE Flow Manager web tool)

Personalization

- User can create two shortcuts to favorite floors
- Application also includes an option to define "from" and "to" floors for every call

User friendliness

- Intuitive, flexible user interface
- Easy access rights and user management via separate KONE Flow Manager tool
- Service is continuously developed and users get updates automatically through application stores

Differentiation

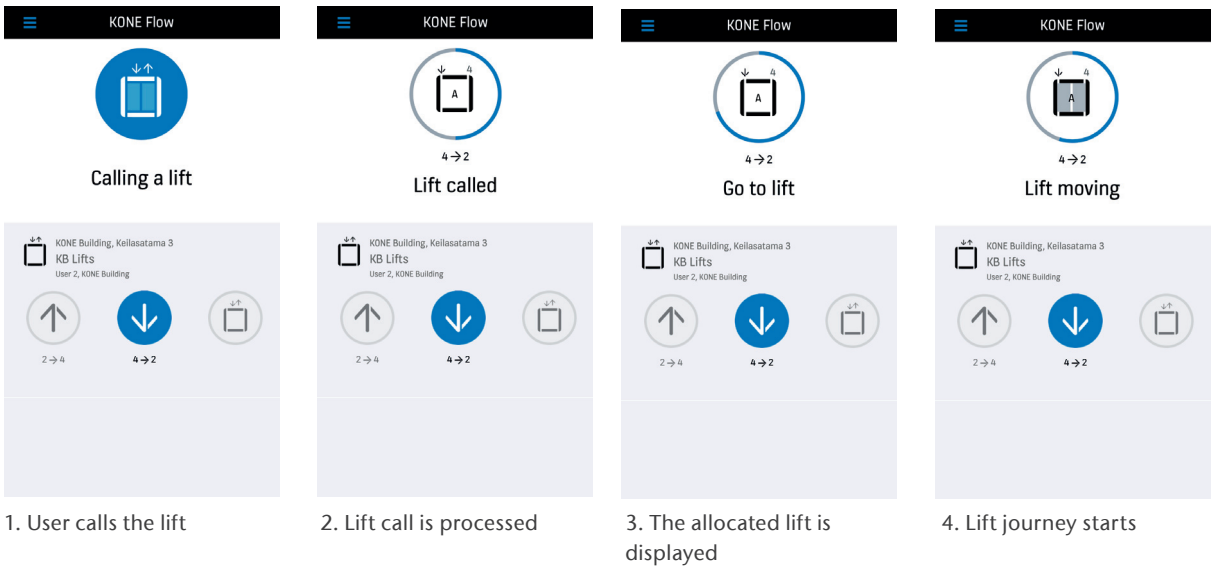
- Great way for building owners to show they care about their residents and want to offer them modern solutions

Increased building value

- Smart solutions can increase the value of the building

CALLING THE ELEVATOR WITH KONE FLOW APPLICATION

When KONE Flow application is opened, the predefined shortcuts are shown. User makes the elevator call by tapping on a predefined shortcut and the name of the allocated lift is displayed. If the desired journey is not listed in predefined shortcuts view, the user can make the needed elevator call by clicking the elevator car symbol and then selecting the departure floor and the destination floor.



MANAGING KONE ELEVATOR CALL IN YOUR BUILDING

The KONE Flow Manager tool is provided for account creation, configuration and management of the KONE Elevator Call users. The administrator of the building (reception, security personnel, facility manager and so on) uses the KONE Flow Manager.

